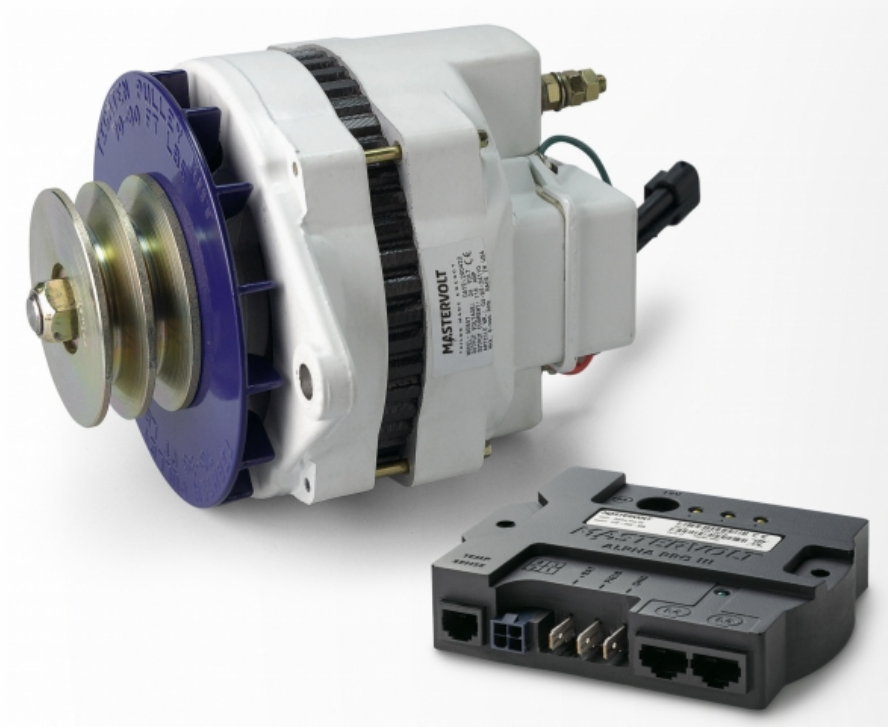


Alpha 24/110 III



Product code: 48624110

Delivery includes Alpha Pro III charge regulator.

- Fast & complete charging of starter and service batteries.
- Power supply for all consumers.
- 12 V and 24 V versions.
- 75 A to 150 A charge current.
- Standard delivered with Alpha Pro III charge regulator for an optimal performance and longer-lasting batteries.

Using a Battery Mate or battery isolator in conjunction with an Alpha alternator makes it possible to easily charge two or three separate battery sets simultaneously.

TIP: A second alternator on the main engine, combined with a larger battery bank and inverter, could be an alternative for a generator.

For all engine types

Alpha alternators are equipped with several fixations for customised alternator brackets, available from your installer or engine supplier. Some engine brands come with Mastervolt alternator brackets as an option.

Fast charging, even at a stationary rpm

Standard alternators only supply the specified capacity at a high rpm. The Mastervolt Alpha alternator is specifically designed for powerful charging, even with a low engine rpm.

Multigroove pulley

The 12/130 and 24/75 models are also available with a multigroove pulley.

Performs above 40 °C

Forced cooling by fan operation of the pulley provides a lot of power in higher temperatures, especially close to the engine.

Specifications

General specifications

Charge regulation	an Alpha Pro III regulator comes standard with all models
Total charge current	110 A
Cable length regulator/alternator	1.5 metre, oil resistant connection cable - delivered as standard
Belt section	2xA
Isolated operation	yes
Rotational direction	2
Mounting	six o'clock
Dimensions	see 'Downloads' for drawings
Weight	10.1 kg 22.3 lb

Technical specifications

Charge voltage Absorption	28.5 V
Charge voltage Float	26.5 V
Nominal diameter pulley	89 mm 3.5 inch